

# Qsep<sub>1</sub> Bio-Fragment Analyzer

## Portable Capillary Electrophoresis

### Features

- *Hand carry size*
- *5kg weight only*
- *Wi-Fi connectivity*
- *DC 12V power*  
(works with car adapters)

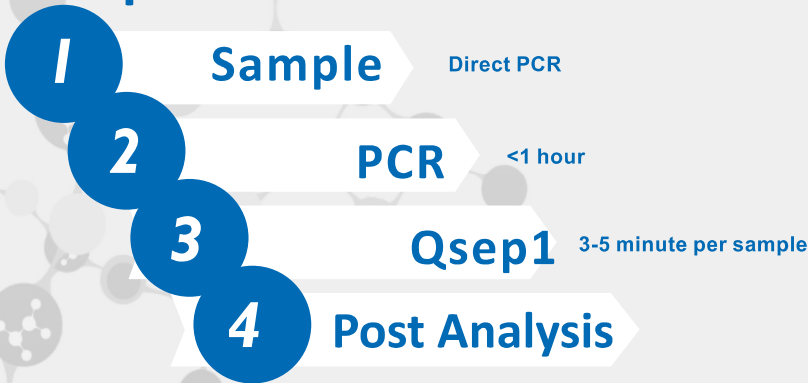


**Lightweight • Compact • Easy-to-Use**

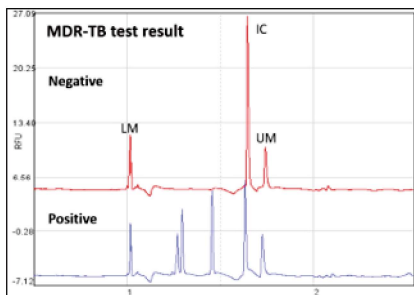
- **Clinic**  
(For PCR Diagnostics test)
- **Point of care**
- **Mobile laboratory**
- **Teaching laboratory**

# Applications of Fragment Analysis (DNA/RNA)

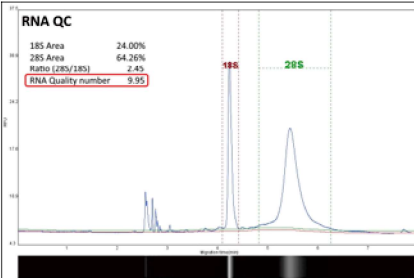
## Steps:



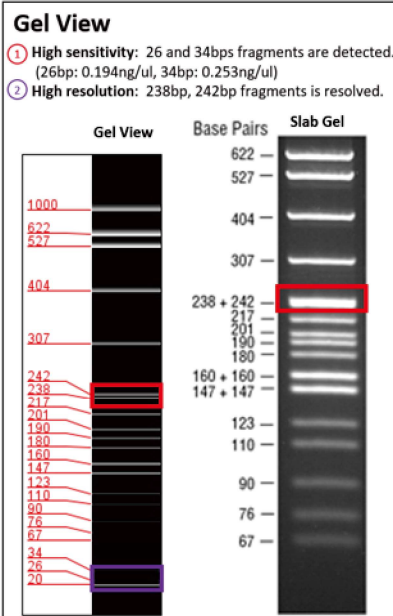
### NAAT (MDx)



### Total RNA QC



### Comparison (CE vs. slab-Gel)



## System Highlights

- Auto Sampling  
Automated process 1-16 samples  
\*Special consumables required for analysis of 16 samples
- Disposable Gel-capillary  
No need for gel preparation  
100-300 runs per cartridge
- Rapid Analysis  
2-7 minutes per sample
- High Sensitivity  
Detects as low as 0.1ng/uL
- High Resolution  
1-4 bp (Between 100-500 bp)
- Minimum Sample Volume  
1uL in Micro-Vial (Cat. No.: C104250)  
10/20uL in Standard 0.1/0.2 ml PCR tube

## Applications

- CRISPR QC
- Genetic Profiling
- Restriction Fragment Length Polymorphism (RFLP)
- PCR Product check (PCR Optimization)
- DNA Primer QC
- Genomic DNA & NGS QC
- Plasmid Purification & Vector Cloning Analysis
- Total RNA QC
- Synthesized Oligonucleotides

## Specifications

- Detection: Fluorescence
- Light Source: LED
- Separation Voltage: 1-8KV
- Connectivity: Wi-Fi remote control
- Power Source: DC 12V (110-240V)
- System Weight: 5.5 kg
- Instrument Volume: 24x21x30 cm